

## Step 6

There is a locking latch on the bottom wall mount only.

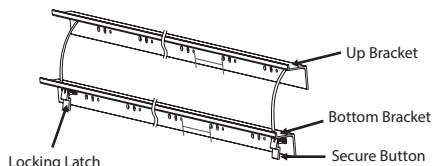


Fig 16

## Step 7

Fix the mounts onto the wall separately. (Fig 17-18)

H = Viewing height + 110mm

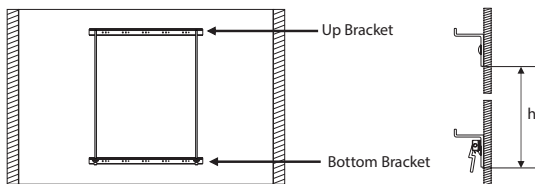


Fig 17

Fig 18

## Step 8

Hook screen onto the top mount and bottom mount. (Fig 19-20)

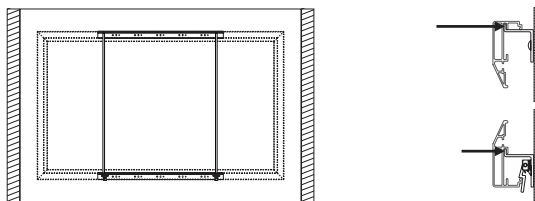


Fig 19

Fig 20

## Step 9

To uninstall the screen, please press the latch towards the wall to release bottom frame from bottom mount, then lift the screen a little to release it totally from top and bottom groove of the mounts. (Fig 21-22)

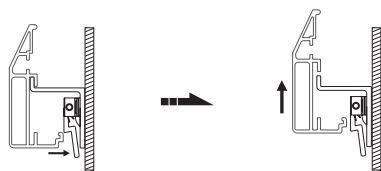


Fig 21

Fig 22

Happy Viewing!

## Protecting Your Screen:

- Keep away from direct sunlight or high temperatures.
- Use a soft brush or cloth to lightly remove any foreign particles.
- Keep the fabric from scratches.

## Cleaning Your Screen:

- Do not use any solvents, chemicals or abrasive cleaners on the screen surface.
- Use a mild detergent with warm water to remove any marks on the surface or screen case.
- Always immediately dab the screen with a lint free soft cloth to avoid soap marks.
- Do not scrub the surface.

Warranty: 12 Months

# Grandview

## FLOCKED FRAME SCREEN USER MANUAL



 **Amber** TECHNOLOGY

A USTRALIA

[ambertech.com.au](http://ambertech.com.au)

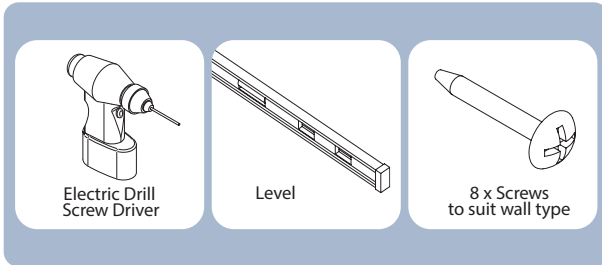
NEW ZEALAND

[amber.co.nz](http://amber.co.nz)

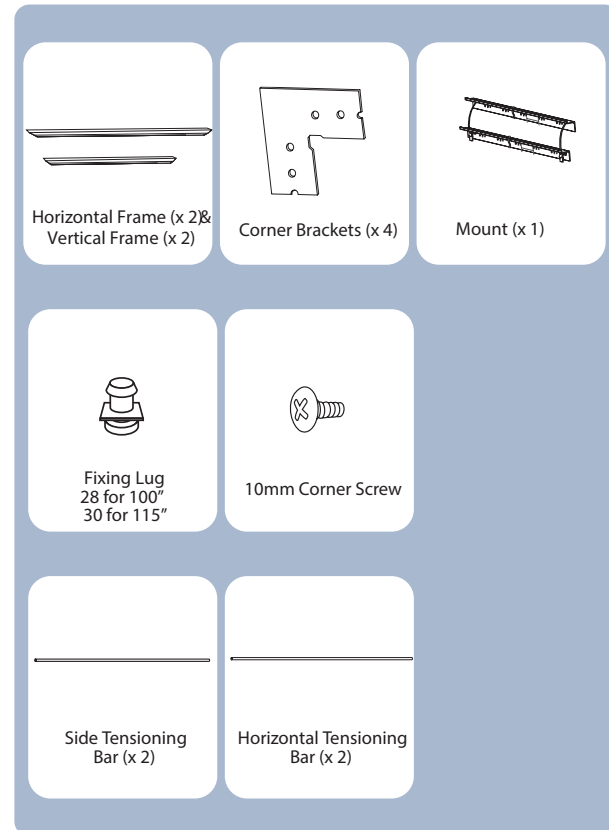
Product Code:  
GRFFxxxH & GRFFxxxAT

 **Amber** TECHNOLOGY

## Required (not supplied)

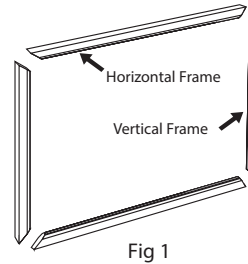


## Supplied parts



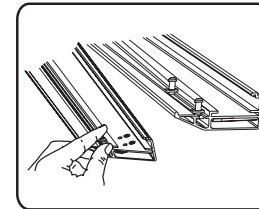
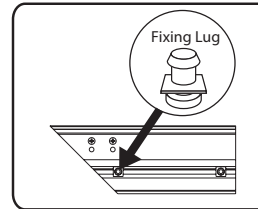
## Step 1

Lay each section of the frames on a tidy flat surface. (Fig 1)



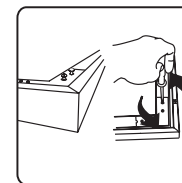
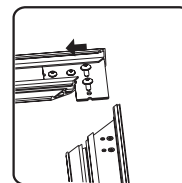
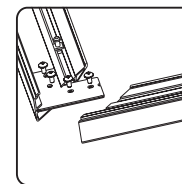
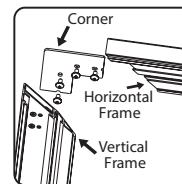
## Step 2

Slide Fixing Lugs into grooves on the reverse side of frames. (Fig 2 - 3)



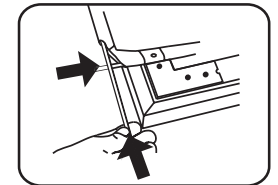
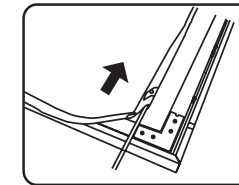
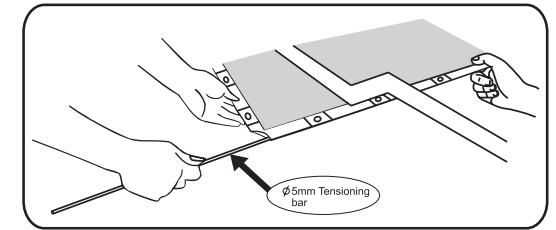
## Step 3

Insert both horizontal and vertical frame sections with the corner stakes. Ensure all joints are square and then lock off by tightening with the screws provided. (Fig 4-7)



## Step 4

Unfold screen fabric and insert the tensioning bars into the fabric grooves. (Fig 8-10)



## Step 5

Align fixing lugs and the eyelets provided on the fabric. Using the tensioning bar, pull fabric eyelets over the lugs. (Tip: Arrange horizontal tensioning bars first then side tensioning bars). (Fig 11-15)

